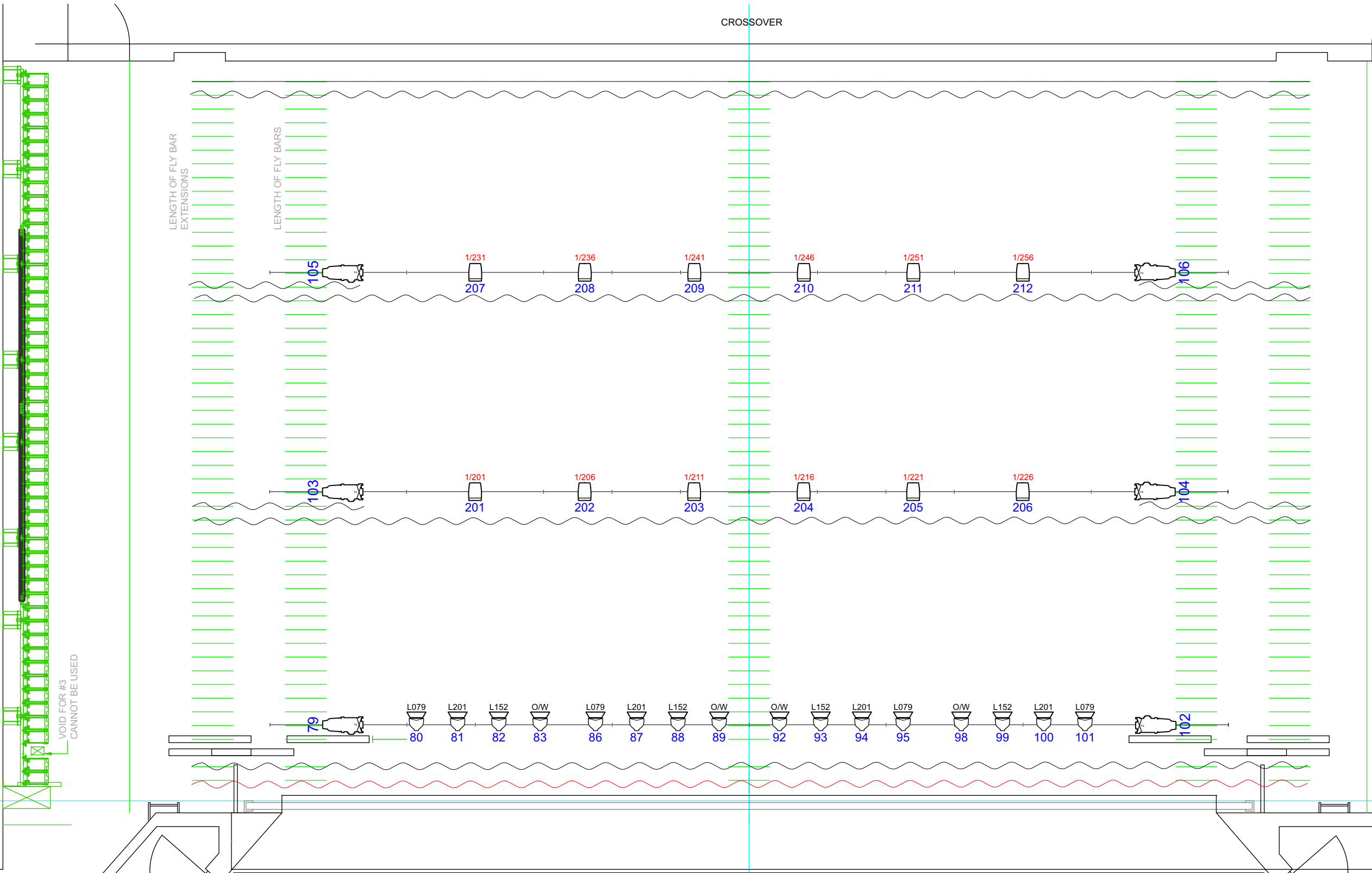


# Overhead Rig

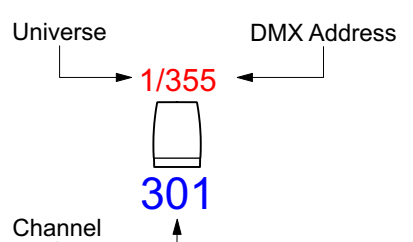
This drawing is not to be scaled  
Verify all dimensions on site

CW52	10500	Cyc
CW51	10300	Full Black
CW50	10100	
CW49	9900	
CW48	9700	
CW47	9500	
CW46	9300	
CW45	9100	
CW44	8900	
CW43	8700	
CW42	8500	
CW41	8300	
CW40	8100	
CW39	7900	
CW38	7700	LX 3
CW37	7500	Legs
CW36	7300	Border
CW35	7100	
CW34	6900	
CW33	6700	
CW32	6500	
CW31	6300	
CW30	6100	
CW29	5900	
CW28	5700	
CW27	5500	
CW26	5300	
CW25	5100	
CW24	4900	
CW23	4700	
CW22	4500	LX 2
CW21	4300	Legs
CW20	4100	Border
CW19	3900	
CW18	3700	
CW17	3500	
CW16	3300	
CW15	3100	
CW14	2900	
CW13	2700	
CW12	2500	
CW11	2300	
CW10	2100	
CW9	1900	
CW8	1700	
CW7	1500	
CW6	1300	
CW5	1100	LX 1
CW4	900	
CW2	500	HEADER
CW1	300	TABS
	0000	line of back of iron



### Symbol Key

	ETC Source4 PAR WFL	16
	Prolights StudioCOB FC	12
	ETC Source4 Zoom 25-50deg	6



- General Notes**
- All dimmers are on Universe One and are Patched One to One.
  - All COB's are powered from the temporary 125amp 3Ø supply.
  - All Source 4 Par's are fitted with barn doors.
  - Pipe-end profile's used for a Gobo breakup wash.

House Lights: 491 - 504, Minus 498  
Intensity: 60%

Tab Warmers: 498  
Intensity: 100%

**WYCOMBE SWAN**

Wycombe Swan Theatre  
St Mary Street,  
High Wycombe,  
Buckinghamshire,  
HP11 2XE

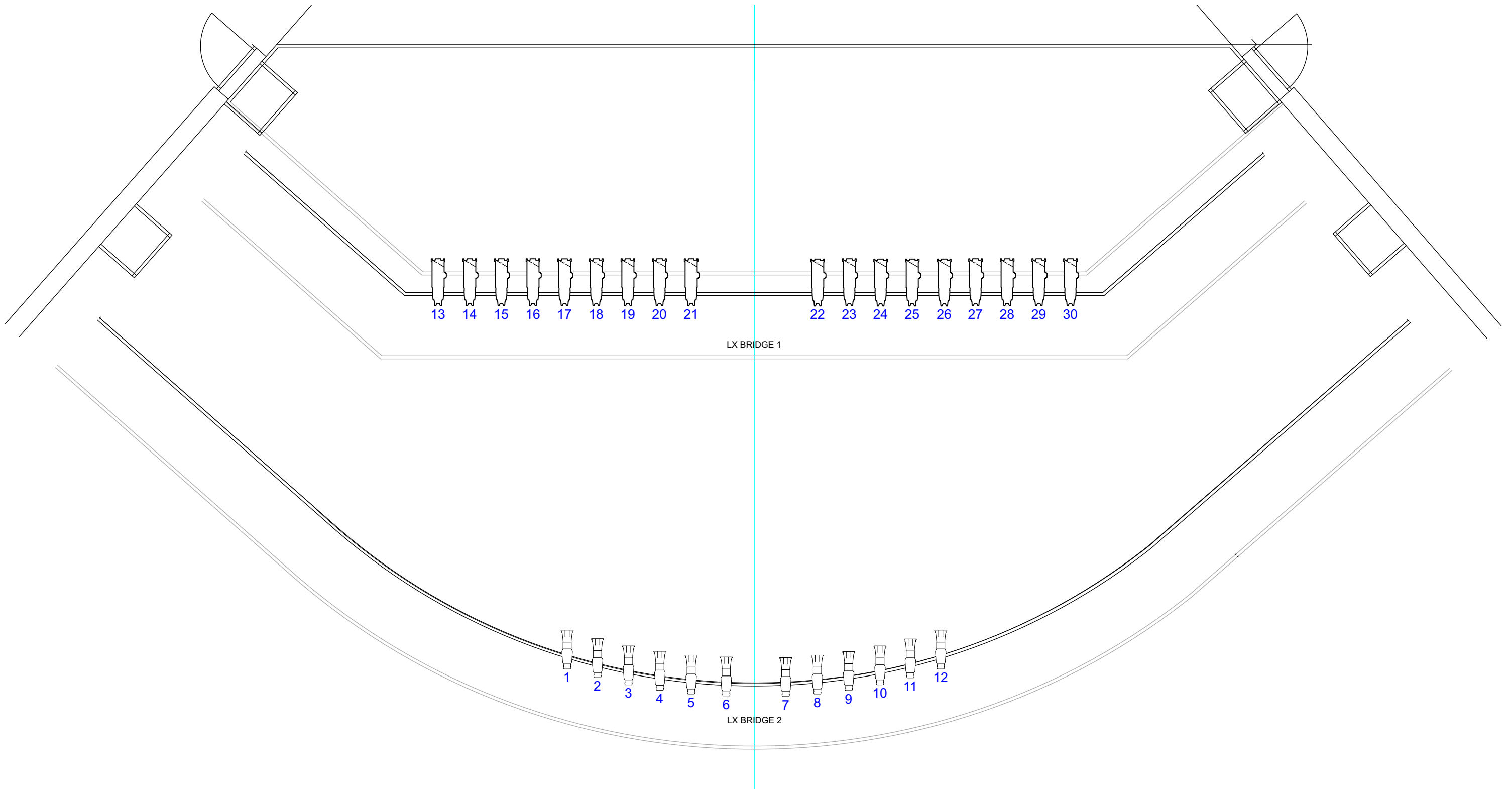
Main House - Lighting Plan

Overhead Rig      REV: A

Date :29/07/2021      Drawn By : Kyle Sepede

# Front of House Plan

This drawing is not to be scaled  
Verify all dimensions on site



## Symbol Key

	ETC Source4 Zoom 15-30deg	18
	ETC Source4 14deg	12

**WYCOMBE**  
**SWAN**

Wycombe Swan  
Theatre  
St Mary Street,  
High Wycombe,  
Buckinghamshire,  
HP11 2XE

Main House - Lighting Plan

Front of House Rig

Date :29/07/2021

Drawn By : Kyle Sepede